



75 GPD Reverse Osmosis Filter System With Storage Tank



Model: JHR07530

Includes Faucet & 3Gal Storage Tank!

Replacement Filters Available at MistKing.com

Read through all the instructions before installing and using this unit.

CONTENTS

- Introduction1
- Package Contents1
- Technical Specifications1
- Before You Start2
- How Your System Works3
- System Components3
- Installation4
 - Tools and Parts Required4
 - Unit Placement5
 - Tubing Connection Using Quick Fittings5
 - Pressure Tank6
 - Diverter Valve6
 - Drain Clamp Installation7
 - Faucet Installation7
- Operating and Maintenance8
 - LED Display and Control Panel8
 - Pre-Filter Flushing (Initial Setup)9
 - Flushing the Pressure Tank9
 - Quick RO Connection Reference Diagram9
 - Regular Operation10
 - Filter Maintenance10
 - Filter Replacement10
- Troubleshooting11
- Safety Instructions11

INTRODUCTION

Thank you for choosing the Jungle Hobbies Reverse Osmosis Unit. This is a standard 4 stage filtration unit, manufactured with strict quality standards to ensure you receive the best product possible. This unit is your first step to cleaner, healthier and better tasting water. The stages and their functions are outlined below.

Spun PP Filter – removes larger particles suspended in water.

Block Carbon Filter – removes any organics, chlorine, odor and turbidity.

RO Membrane – removes bacteria, heavy metals, dissolved matter and salinity.

Inline Carbon Filter (Post Filter) – adjusts the taste of filtered water.

PACKAGE CONTENT

Reverse Osmosis Unit – 1pc

Food Grade Tubing – 4pcx (Red, White, Yellow and Blue)

Faucet – 1pc

Accessories – Tube Plug, Screws, Drain Clamp, Ball Valve, Supply Water Valve

Manual – 1pc

TECHNICAL SPECIFICATION

Voltage and Frequency: 110V-240V 50Hz/60Hz

Wattage: 25W - 36W

RO Element Capacity: 50/75GPD

Tank Capacity: 3.0G Plastic

Inlet TDS: < 250ppm

Chlorine Level: < 0.2ppm

Average RO Rejection Rate: 98%

Inlet Water Temperature (Min/Max): 5°C – 45°C

Flush Type (Model dependent): Auto

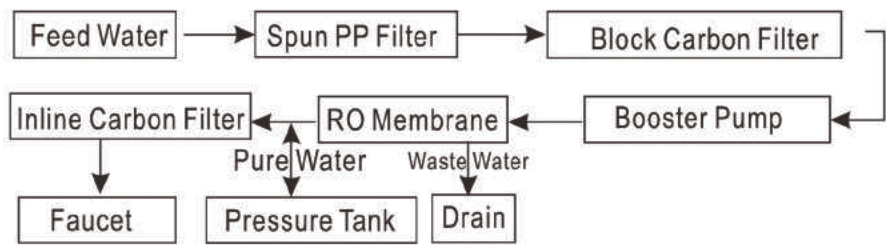
BEFORE YOU START

- Read through all the instructions before beginning. Follow all steps exactly to prevent damage or incorrect operation.
- This system contains filters that need to be replaced at certain intervals. Replacement intervals will vary according to use.
- Install System on potable water only. On non-potable water sources, the system will not function properly and additional pre-treatment will be required.
- Ensure source water temperature is between 5°C – 45°C. The system will not function properly if not within these temperatures. **DO NOT INSTALL ON HOT WATER SOURCE.**
- Do not use system on noticeably contaminated water such as raw sewage or well water.
- This unit operates on 110V -240V power. Please ensure you are using the correct power source.

CAUTION

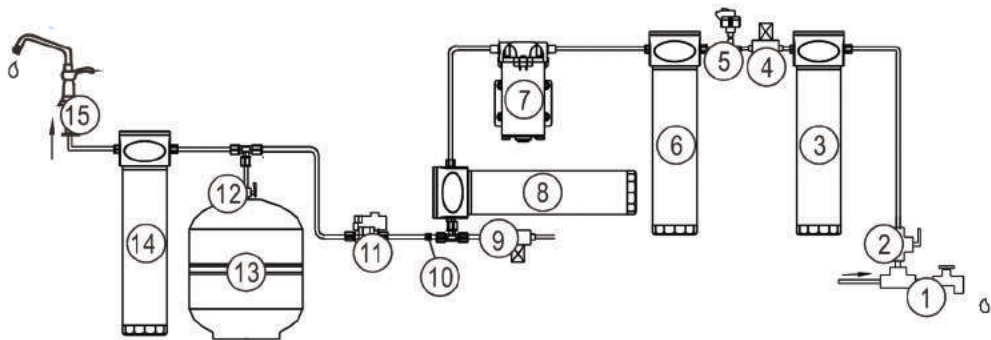
- **Do not** disassemble, open or modify this unit. Tampering with the unit may cause failure or damage and will void warranty.
- **Do not** cover the unit. This will prevent proper head dissipation and can cause damage or fire.
- **Do not** place objects on top of the unit. This may cause damage to the unit and could result in leaking.
- Follow all recommended operating pressures and temperatures. Failure to do so will cause damage to the unit and void warranty.
- Avoid contact with corrosive materials.
- Keep away from heat.

HOW YOUR SYSTEM WORKS



SYSTEM COMPONENTS

Reverse Osmosis Water Flow Diagram



- | | | |
|----------------------------------|------------------------|--------------------------|
| 1. Cold Water Line | 6. Block Carbon Filter | 11. High Pressure Switch |
| 2. Diverter Valve (Water Supply) | 7. Booster Pump | 12. Tank Valve |
| 3. PP Spun Fiber | 8. RO Membrane | 13. Pressure Tank |
| 4. Low Pressure Switch | 9. Auto Flush Valve | 14. Inline Carbon Filter |
| 5. Inlet Solenoid Valve | 10. Check Valve | 15. Faucet |

INSTALLATION
Tools and Parts Required



Knife



Electric Drill



Teflon Tape



Hammer



Adjustable Wrench



Scissors



Faucet



Tank



Supply Diverter Valve



Manual



Water Tubing



Collet Lock



Tank Ball Valve



Faucet Bracket



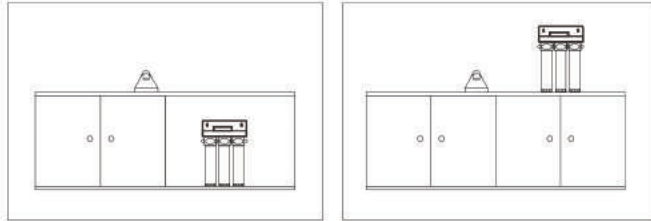
Quick Connect Saddle



Filters

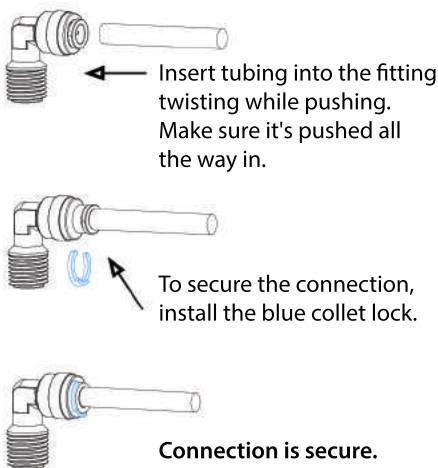
Unit placement

- This unit was designed to be placed under your sink or on your counter top.
- When choosing a location for the unit, ensure easy access to a cold water line, drain pipe, power outlet, and enough room to change filters.

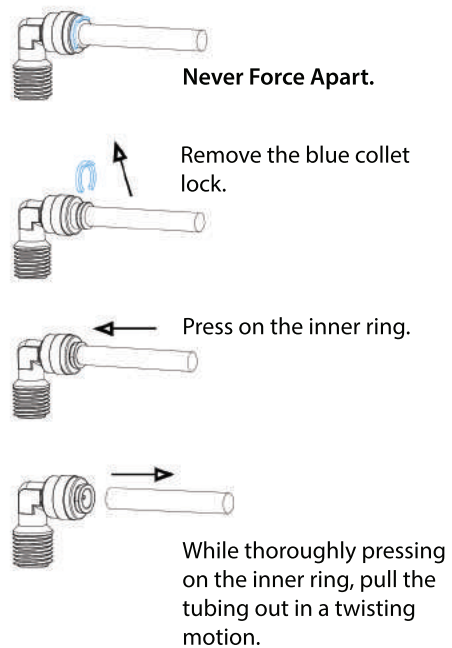


Tubing Connection Using Quick Fittings

Inserting Tubing



Removing Tubing



Pressure Tank

- Place tank on firm and level flooring. (Tank can weigh up to 30lbs when full.)
- It is recommended to keep pressure tank within 10 feet of a faucet.
- Install ball valve by screwing valve on to tank. Apply Teflon tape to prevent leaking.
- Connect the yellow tubing from post filter to the pressure tank.
- Install and hand tighten the tank valve.
- Ensure the check valve is in the open position.



Diverter Valve

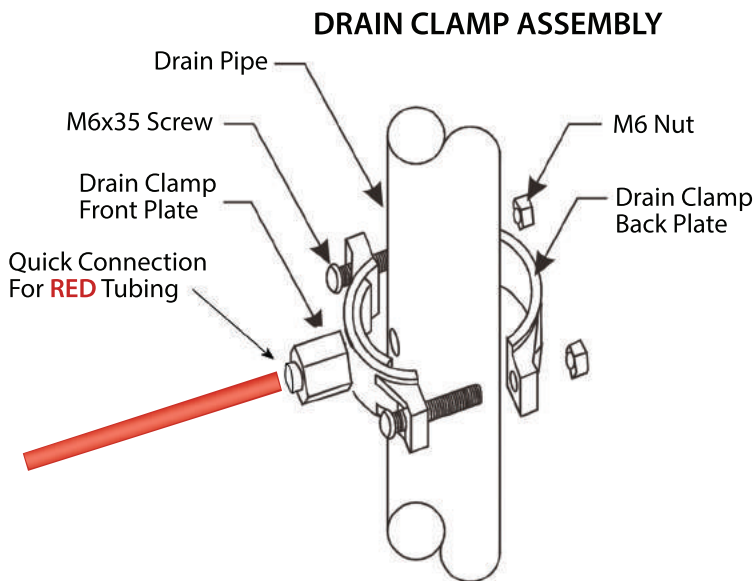
Install the diverter valve to your COLD WATER LINE as per diagram. Connect the white tubing from the RO unit to the diverter valve.



NOTE: Use only a cold potable water supply as supply water. Hot Water will damage your unit. Softened water will extend the life of the RO Membrane.

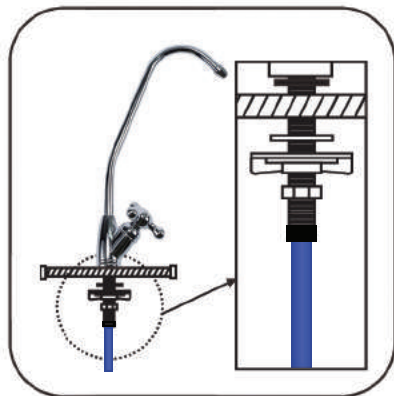
Drain Clamp Installation

- Position the drain clamp on the drain pipe above the drain trap and tighten securely.
- Using the drain clamp as a guide, mark position of the hole. Drill a ¼" hole in your plumbing pipe. **DO NOT drill through both sides.**
- Assemble the clamp and tighten making sure it lines up with the drilled hole.
- Connect Red Waste Water Tubing from the unit to the drain clamp.












Faucet installation

- Select a convenient location near your sink to place the faucet.
- Drill a hole ½" (or 12mm) in diameter in the counter top.
- Place washers, plates, seals and nuts in order as per diagram, and tighten to the counter
- Attach the blue tubing using a 'quick fitting' union.



OPERATION AND MAINTENANCE

LED Display and Control Panel

- When the unit is turned on, the power light will illuminate the unit. The FLUSH icon  will flash and the system will auto flush for 60 seconds.
- The water producing icon  will show running water as the system enters the water producing mode. When the water tank is full the display will show FULL  and will remain illuminated.
- If there is no water flow or water pressure is not sufficient, NO FLOW  will illuminate and a buzzer will sound 10 times.
- The system will produce water for a total of 2 hours, with no flushing during this time. The system will automatically flush for 30 seconds when it is done.
- When the system is working (producing water) for 6 hours or a water leak is detected, it will automatically stop producing water, the CHECK  will flash and a buzzer will sound.
- Four stage filter replacement reminder. (First and second filter set for 270 hours. Third filter set for 1620 hours. Fourth filter set to 540 hours.) The filter icon  shows how much life is left in the filter. As the filter is used, the grid will disappear. When the filter is empty, the filter icon  will flash and an alarm will sound.
- After changing the filter, hold the reset button  (less than 3 seconds.) to reset the filter change interval. The system will chirp once and go into select function mode. Quickly press the reset button to select the filter you want to reset, then hold the reset until you hear a system reset chime and the filter icon reads full.
- To exit the filter reset function, wait 5 seconds
- FLUSH button  . If you press the flush button while the unit is flushing, the flushing cycle will be canceled. Pressing the flush button while water is producing or in FULL state will initiate a 120 second RO membrane flush. **DO NOT PRESS FLUSH while the filter is removed.**



Preparing the RO unit for the first time. Please follow all steps. Proceed only once previous step is completed.

Pre-Filter Flushing (Initial Setup)

- Close the valve on the RO Tank
- Open faucet
- Open water at the main diverter valve, allowing water to enter the system. It will drip through the faucet, initially charcoal stained as it's rinsing. Let it drip (approx 30-60min) or until water is visibly clear.
- Open the valve on RO Tank. Wait 2 min for pressure to equalize, then close the faucet.

Tank Flushing (Initial Setup)

- After flushing the pre-filters, allow the unit to operate and fill the pressure tank.
- Once the filter display shows FULL, discharge the pressure tank by leaving the faucet open. Once the tank is completely empty, close the faucet and allow the tank to fill again. It will take approximately 3.5 hours to fill the tank.
- The system is now ready to use.

Quick RO Connection Reference Diagram



Regular Operation

Once the system is set up and plugged in, it will operate and begin filtering water automatically once the faucet is closed. The unit will switch off automatically when full. After use, the unit will flush automatically.

Filter Maintenance

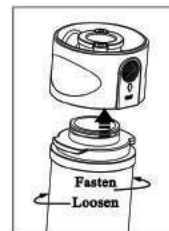
To ensure the unit operates at its optimum level, routine maintenance is required. (The frequency of maintenance depends on the supply water quality. Filter change times may vary.) Below are some guidelines for scheduled filter changes.

- Change Spun PP filter and Block Carbon filter every 3-6 months or as required.
- Inline Carbon filter every 6-12 months or as required.
- Change RO membrane every 18-24 months or as required.

If you will be away or not using the unit for an extended period of time, disconnect power from the unit. If the unit has been shut down and not used for an extended period of time, perform the same flushing procedure as in the initial set-up.

Quick Change Filter Replacement

As a good practice, always be able to quickly close the main water source at the inverter valve if needed.



- Make sure the system is not FLUSHING before changing the filter.
- Close Tank Ball valve on Pressure Tank.
- Open faucet and drain any remaining water from the system.
- Turn the old cartridge and remove it from the system.
- Align the new cartridge with the central cap then slightly push up and twist to lock it in place
- Perform a manual FLUSH any time a filter has been changed. While the RO tank is closed, let the faucet drip (approx 30-60min) until the water coming from the faucet is visibly clear.

TROUBLESHOOTING

Problem	Cause	Solution
No product water	Water supply is off	Turn on feed water
Not enough water	Water supply is blocked Feed water valve is plugged No drain flow	Clear restriction Open valve or unplug Clear or replace check valve
Pump not running	Low feed water pressure No power or loose connection Transformer burnt out	Check source water supply Turn on power supply Replace filter cartridges
Pump is running but no water	Pre-Filters plugged Inlet solenoid valve not working	Replace filter cartridges Repair or replace valve
System will not shut off	Auto shut off switch not working	Repair or replace switch
Abnormal pump noise	Pre-filter plugged Low feed water pressure	Replace filter cartridges Adjust feed water pressure
No drain water	Plugged drain flow restrictor	Replace
Tubing Leaks	Tubing Connection incorrect Defective or damaged tubing	Check/reinstall tubing Replace section of tubing

SAFETY INSTRUCTIONS

This appliance is intended to operate and function as per the instructions in this manual. It is not designed to operate outside of the specifications listed and any attempt to do so or tampering with the unit, can cause damage to the unit and/or bodily harm. This unit is not a toy, keep out of reach from small children. If the unit requires service or repair, please contact your local service technician or sales representative.

Ensure feed water temperature is over 4°C. Using water below 4°C can cause ice to form and damage the unit.

Ensure the power source is correct before connecting the unit. Incorrect voltage could result in damage to the unit and/or a fire hazard.

If the power cord is damaged, unplug and discontinue use immediately.



For misting systems and accessories please visit:

MistKing.com

MistKing® is a Registered Trade Mark
of Jungle Hobbies Ltd

JungleHobbies.com

©Jungle Hobbies Ltd. All Rights Reserved.